
Stone Essentials® Ultimate Enhancer

PRODUCT DATA SHEET

Description

Stone Essentials® Ultimate Enhancer is a premium color enhancer and stain protector for interior/exterior exotic natural stone, granite, marble, travertine, soapstone and agglomerate surfaces. Stone Essentials® Ultimate Enhancer is recommended to match the color between top and edge on epoxy resin-treated stone, natural stone and tile leaving a non-glossy, transparent, UV resistant, vapor-permeable barrier to resist water and stains while enhancing the substrate with a “wet-look” appearance. It also eliminates constant mineral oil treatments for soapstone leaving a beautiful patina look from day one.

Advantages

- Superior color enhancement
 - Deep-penetrating
 - Preserves natural appearance
 - Excellent water and oil barrier
 - Vapor-permeable (breathable)
 - Built-in stain protection – easy cleanability
 - Interior and exterior use
 - Weather resistant
 - Freeze/thaw resistant
 - Non-yellowing/U.V. resistant
-

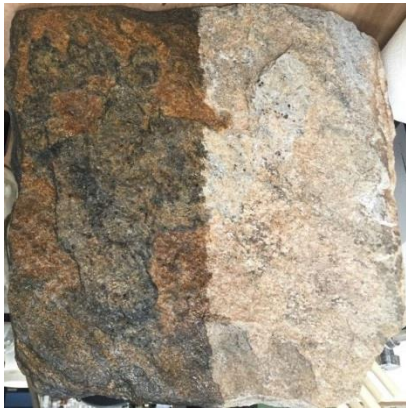
Typical Applications

Note: ONCE ENHANCED, STONE CANNOT BE RESTORED TO ORIGINAL APPEARANCE. To ensure product performance and satisfaction, always pre-test this product in an inconspicuous area. Users must determine suitability of product for their intended use. ***Reseal container tightly after using as this product reacts with moisture.**

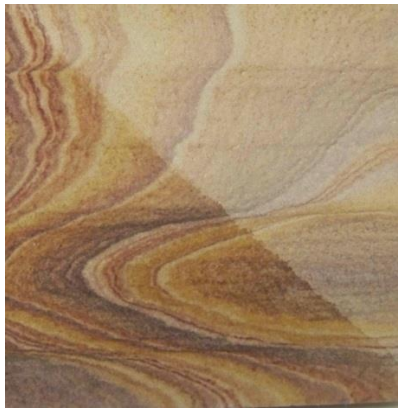
Before applying sealer/enhancer impregnator, make sure all surfaces to be treated are thoroughly clean and completely dry. Protect and cover surfaces not to be treated by this product.

1. Apply surfaces with Stone Essentials® Ultimate Enhancer allowing it to evenly coat and completely saturate the entire surface. Stone Essentials® Ultimate Enhancer should be applied with a paint pad, sponge or clean towel **Note: Do NOT Aerosolize.**
2. Allow Stone Essentials® Ultimate Enhancer to absorb and penetrate the entire surface (15 minutes). **Do NOT allow sealer to dry on the surface.**
3. Using a clean, dry towel, **completely wipe up all excess sealer from the surface** prior to allowing sealer to dry.
4. Do not walk on surface for 6-8 hours. Full cure is achieved in 24 hours.
5. For best results, allow 24 hours for Stone Essentials® Ultimate Enhancer to completely dry and cure.
6. Clean tools with mineral spirits.

PRODUCT DATA SHEET – Ultimate Enhancer



enhanced face stone



enhanced sandstone



enhanced soapstone

Coverage

Application rates for natural stone, tile, grout, and masonry will vary depending on the porosity of the substrate to be treated. Some stone and grout areas will absorb more quickly than other areas.

Approximate Coverage Per Application

Low Porosity	1200-1800 sq ft/gal
Medium Porosity	800-1200 sq ft/gal
High Porosity	100-800 sq ft/gal

Reapplication: Reapply every three to five years for interior/exterior application or when needed.

Maintenance

Natural stone needs to be cared for properly. Stone Essentials® Ultimate Enhancer is not an absolute barrier to all spills, stains, and soils. However, natural stone, tile, grout, and masonry will repel stains and soils effectively when proper cleaning products and methods are used. To maintain your stone surfaces and grout use Stone Essentials® Daily Cleaner with Protector or a dilution of Stone Essentials® Daily Commercial Cleaner Concentrate.

Safety Precautions

- KEEP OUT OF REACH OF CHILDREN.
- COMBUSTIBLE LIQUID AND VAPOR! Keep away from heat, flames and sparks. Eliminate all sources of ignition – heat, sparks, flames, electricity, friction, and static. Do not smoke when using.
- Do not use this product with pressure sprayers. Do not aerosolize.
- Do not breathe spray or mist. Use this product with adequate ventilation. When there is potential for airborne exposures in excess of applicable limits, wear NIOSH-/MSHA-approved respiratory protection.

PRODUCT DATA SHEET – Ultimate Enhancer

- READ SAFETY DATA SHEET BEFORE USING. Use only as directed. Wear protective gloves, goggles, and respirator when using. Avoid eye and skin contact. Do not breathe mists or spray. Keep container closed when not in use. Store in a cool, dry area.
- Protect and cover surfaces not to be treated by this product.

Technical Support

For additional technical support, contact Stone Essentials® Customer Service at 1-866-786-6350 Monday-Friday from 8:30 a.m. to 5:00 p.m. EST or visit our website at www.stoneessentialsonline.com.

The information contained herein is based upon practical experience with Stone Essentials® Ultimate Enhancer. It does not constitute a guarantee. Purchasers shall determine the suitability of such products for their own purposes. User assumes all risks and liability whatsoever in connection therein. Manufacturer shall not be liable for any injury or inability to use this product.